



LA PUNTASSA

basic information

APARTMENT A

LA PUNTASSA

Apartment A

Specification of equipment



LA PUNTA S S A

Apartment	A
Interior area	99,92 m²
Front Terrace	5,60 m²
Rear Balcony	N/A
Total area	105,52 m²





LA PUNTASSA apartment A

Basic equipment

1. Beech or mahogany interior doors (4 cm thick)
2. Beech or mahogany entrance door (4,5 cm thick)
3. Pre-installation (preparation for connection) of air conditioning in every bedroom and living room
4. Windows in aluminium frame with laminated glass, European quality.
5. Tiles Home Beige (PHB6002 Home Beige Rett. 60*60)
6. Wooden living room and pantry wall
7. Internal staircase in concrete with wood. Elegant and safe.
8. Terrace tiles (PHB6002 Home Beige Rett. 60*60), as inside.

Bathroom

9. Shower cabin, hanging toilet, wash basin with tap on cement or wooden plinth.
10. Wooden or concrete sink stand.
11. The floor and wall tiles will be as shown in the figure.
12. Internal fan for bathroom ventilation.
13. An electric water heater with a capacity of 100 litres.
14. Plasterboard ceiling in bathroom, kitchen and living room.





Water and electricity

15. Water distribution to the kitchen, toilets and bathrooms.
16. Spot LED lights throughout the apartment.
17. Switches and electrical sockets with Ticino material or similar present on local market.
18. Preparing for the installation of kitchen units (water, lighting, sockets, waste)

Terrace

19. The dividing wall between the apartments on the terrace is made of white stone.
20. The French windows.
21. Mosquito nets in window and door frames that can be opened.
22. Terrace and balcony equipped with railings.
23. Terraces and balconies with spot lighting on ceilings or walls, outdoor power points.





24. House components made of high-quality concrete.

25. The whole house is plastered in white.

Other attachments are to be supplied by the building contractor:

26. Statics project

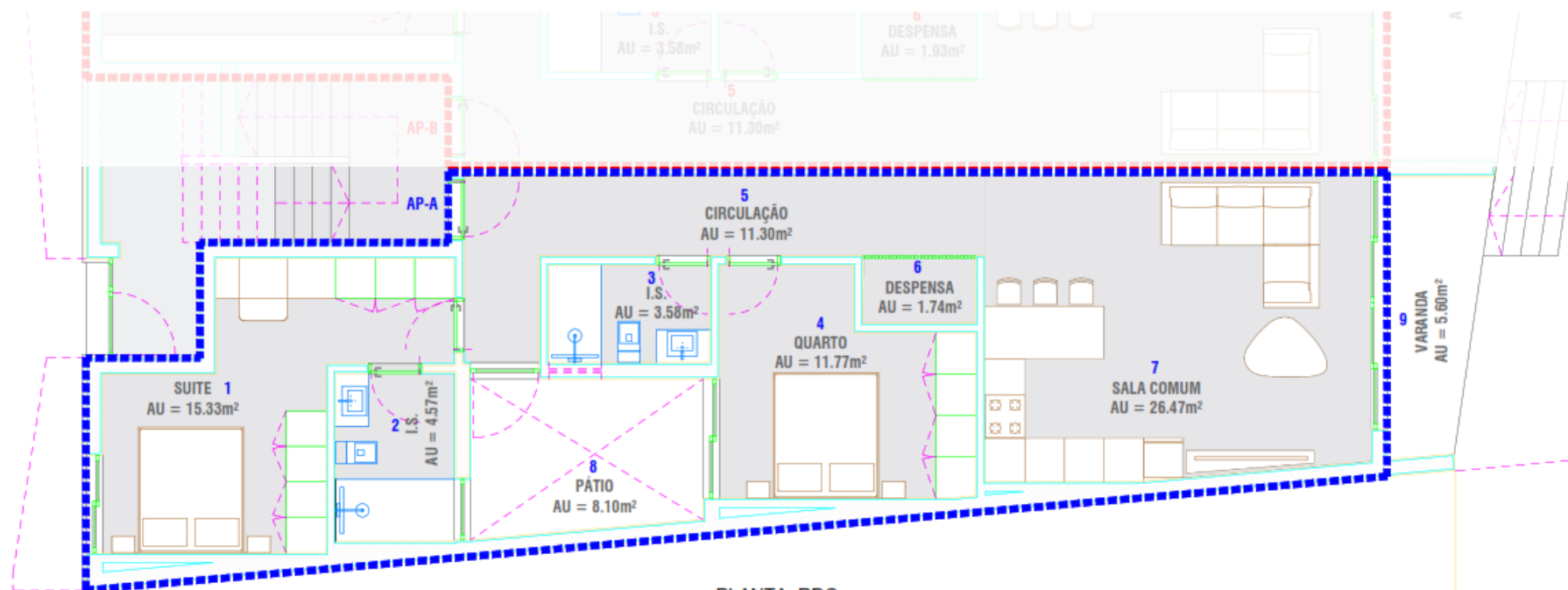
27. Complete architectural project

28. Electrical, water and waste distribution project

29. Handover of the work in June 2025

30. Warranty 5 years from the date of delivery of the finished work.

APARTMENT A



PLANTA_RDC

..... ABC = 98.17m²

..... ABC = 99.92m²